

Dear Neighbour

The Sweyne Park School

Project Newsletter

March 2021

**MORGAN
SINDALL**

CONSTRUCTION

Safe

On time

Snag free

Delighted customer

Recommended

And we're off!

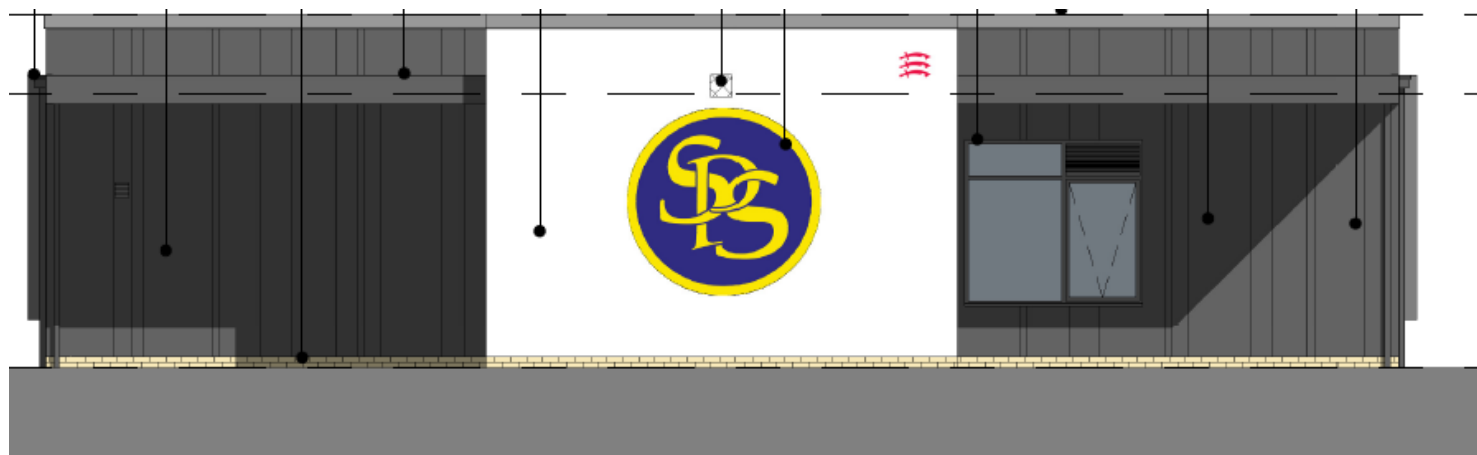
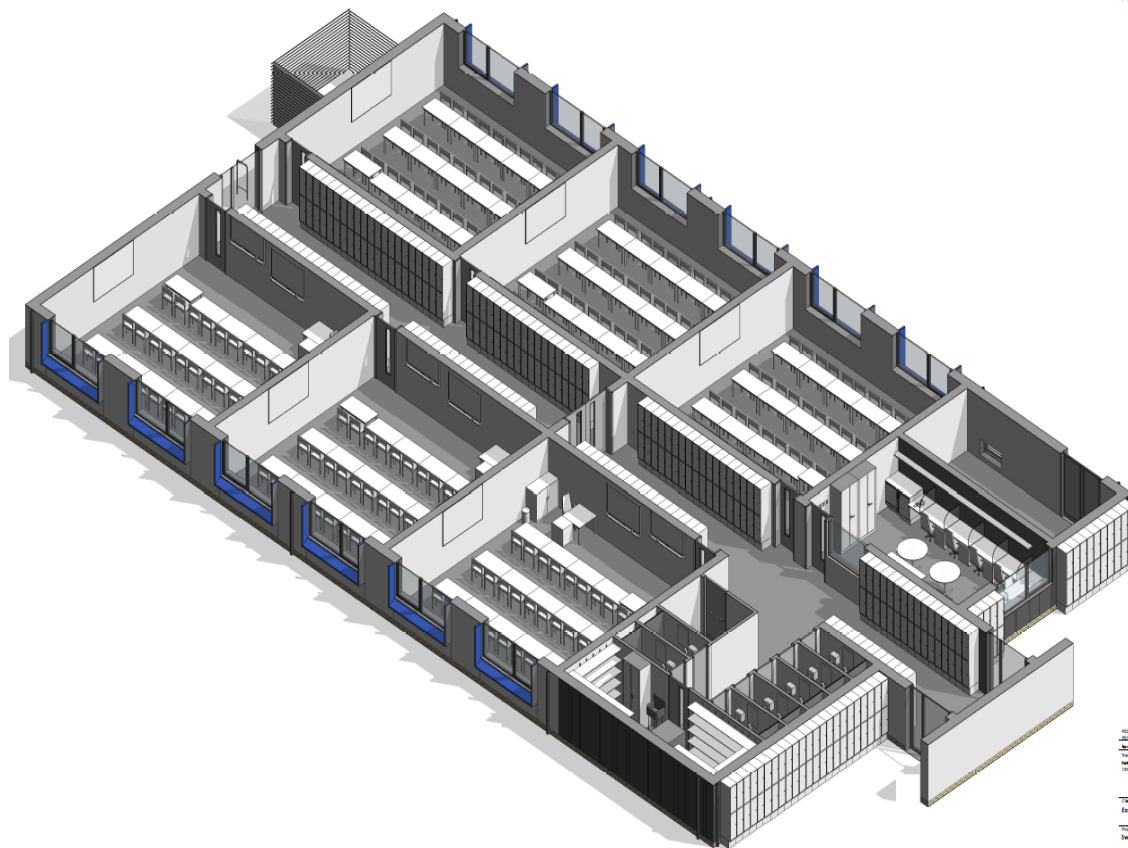
Welcome to Dear Neighbour, our newsletter that keeps you up to date with progress at the Sweyne Park School Project

Essex County Council have appointed Morgan Sindall for the new extension to Sweyne Park School. The works will be taking place within the existing school grounds

We will arrive on the 29th March and start by installing the perimeter fencing around the site area which demarcates the site footprint. We will then begin setting up our welfare facilities and site office which will be in place for the duration of the project

The first task on site will be the reduced level dig before we start forming the foundations. The construction method for this project is modular, therefore the bulk of the construction works are taking place off site in a factory in Hull. They then make the journey down to Rayleigh and are then craned into position and bolted together, for us to then bring to a finish on site.

We will continue to provide regular updates as the project progresses; a copy of which will always be displayed on the hoarding at the site entrance. We will also soon begin engagement with the local community and events will be organised in due course. Watch this space!



CCS Registered Site

Any issues? Call 0800 7831 423 or email enquiries@ccscheme.org.uk

As an associate member of the Considerate Constructors Scheme (CCS), we are committed to the environment and communities in which we work. This includes enhancing our sites' appearance, respecting the community, protecting the environment, securing everyone's safety and valuing our workforce.



Keep up to date with Morgan Sindall across the UK

Follow us on twitter [@morgansindallci](https://twitter.com/morgansindallci) for all the latest news

Find out more about us on <http://construction.morgansindall.com>

Keep up with us on LinkedIn at www.linkedin.com/company/morgansindall

Contact Us

If you have any questions or concerns, please contact the Morgan Sindall office on :

01245 974040

Alternatively, one of the project team on the right will be able to assist.

The project is a new innovative building constructed using state of the art off-site pre-fabricated modular techniques.

The aspiration for the building plan is to achieve a high quality user experience with the use of a off site 'Modular' construction methods. Modular construction is a process in which a building is constructed off-site, under controlled factory conditions, using the same materials and designing to the same codes and standards as conventional buildings—but in about half the time. Buildings are produced in "modules" that when put together on site, reflect the identical design intent and specifications of highly sophisticated site-built facilities —without compromise.



Dale Smith

Contracts
Manager

07764660065



Charlie Fix

Site Manager

07973642914



Lee Fisk

Senior SHE
Advisor

07970 800286