

HOME LEARNING CLUB

Monday - Friday
LD1 3.05-4pm
Friday 3.05-3.30pm

There is always someone here to provide help with home learning.



Thursday BOOK CLUB

Reading/book Club to discuss all things book related, shadow awards & meet authors.

We meet in the Library during tutor time.



English

Monday
KS3 Workshop
EN4
3.15 - 4pm



TECH CLUB

THURSDAY

3.05-4.00PM

MAIN HALL

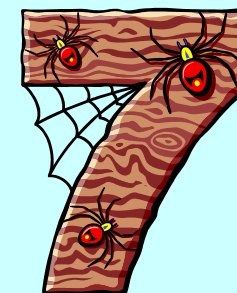
COVERS STAGE SOUND,
LIGHTING & GENERAL
PRESENTATIONS

FOR THOSE WHO PREFER
TO BE AT THE BACK OF
THE STAGE RATHER THAN
THE FRONT!

The Swayne Park School

Activ8

Year



Spring 2023

Your comprehensive guide to after school activities and clubs

The Library is open every morning from 7:45am (8:00am Monday) and after school until 4pm. Book Club is on Thursdays, during tutor time.

LD1 is open mornings from 8am (except Wednesdays) and after school until 4pm.

IT1 is open every morning from 8am and after school until 4pm.

Keep an eye on the departmental noticeboards for information about your clubs and any new clubs that may be starting.



POTTERY CLUB

MONDAY - 3.15PM
Please see Mrs Stapleton



TEXTILES CLUB

TX1 - MONDAY
3.15-4.00pm
Miss Smollett



ART

For enthusiastic artists!

Tuesday 3.05-4.00pm

After half-term
in AR1



Music

Please see the
Music Department
Notice board for
details and the
separate flyer



Dance Club

tuesday

3.15pm - 4.15pm

in the gym



(Girls
and
Boys)

History Hunters



NOT RUNNING
THIS TERM

Drama Club

Wednesday

DR1 - 3.15pm-4.15pm



BSL Club

Learn Introductory BSL

RB1

Thursday, 3.15-4pm from
19th January 2023

Resistant Materials

KS3 catch-up & extension

TUESDAY

Miss Beard - RM2

3.10pm-4.00pm



RIGHTS RESPECTING SCHOOL GROUP

The Rights Respecting Group will be running on
Wednesdays
3.05pm-4pm
HU3

Newcomers welcome



Maths maniacs (by invitation only)

MONDAYS

3-4PM

MATHS DEPARTMENT

Please see

the PE Noticeboard

for all clubs

Chess Club

Tuesday 3.05-4.00pm

SC4

Open to all abilities
Mr Chouls



BSL LEVEL 1 CLUB

RUN BY CAROL COOK (DON'T SHOUT OUT)

TUESDAY 3.15-4.15PM

"Limited Places"

Geography



KS3 Drop-in session every day
in GG4
3.15pm-4pm

BOOK CLUB

IN THE LIBRARY

THURSDAY MORNING IN TUTOR TIMES.