

HOME LEARNING CLUB

Monday - Thursday

LD1 ~ 3.05 - 4pm
Friday 3.05 - 3.30pm

There is always
someone here to
provide help with



RIGHTS RESPECTING SCHOOL GROUP

The Rights Respecting Group will be running on
Wednesday
3.05 - 4.00 p.m. in HU3



BSL LEVEL 1 CLUB

RUN BY CAROL COOK
(DON'T SHOUT OUT)

TUESDAY 3.15-4.15PM

"Limited Places"

The Swayne Park School

Activ8

Year

Eleven

Autumn 2022

Your comprehensive guide to after
school activities and clubs

The Library is open every morning
from 7:45am (8:00am Monday) and
after school until 4pm.

LD1 is open mornings from 8am
(except Wednesdays) and after
school until 4pm.

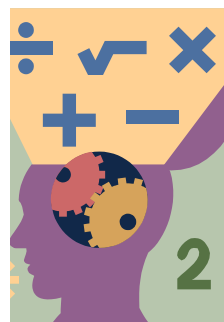
IT1 & IT2 are open every morning
from 8am and after school until
4pm.

Keep an eye on the departmental
noticeboards for information about
your clubs and any new clubs that
may be starting.

MATHS

KS4 WORKSHOP

There is a workshop most
afternoons
3.05-4pm
MON, TUES & WED



Please speak
to your
teacher for
individual
timings, venue

GEOGRAPHY

TUESDAY

Exam question sup-
port

or exam knowledge
revision support

3.15-4.00pm

Chess Club

Tuesday

3.05-4.00pm

**Open to all
abilities**

Psychology

Study Support Sessions

Please check with the
subject teacher

History Hunters



NOT RUNNING
THIS TERM

NOT RUNNING
THIS TERM



ICT

NOT RUNNING
THIS TERM



MEDIA

TUESDAY
GCSE WORKSHOP
3 - 4pm

WEDNESDAY
GCSE WORKSHOP
3 - 5.30PM

Workshop - by arrangement
Thurs/Fri.

For all your
PE CLUBS,

please see the PE

Music

Please see the
Music
Department
Noticeboard



GCSE D&T RM

TUESDAY WEEK A
MRS CURD - RM2
WEEK B - MISS BEARD
3.05-4.00PM