

## HOME LEARN- ING CLUB

**Monday - Thursday**

LD1 ~ 3.05- 4 pm

Friday 3.05 - 3.30

There is always  
someone here to  
provide help with



## RIGHTS RESPECTING SCHOOL GROUP

The Rights Respecting  
Group will be running on  
Wednesdays  
from 3.05 - 4 pm  
HU3

New-



# Science

**NOT RUNNING  
THIS TERM**



The Sweyne Park School

## Activ8

Year



Autumn 2022

Your comprehensive guide to after  
school activities and clubs

The Library is open every morning  
from 7:45am (8:00am Monday) and  
after school until 4pm.

LD1 is open mornings from 8am  
(except Wednesdays) and after  
school until 4pm.

IT1 & IT2 are open every morning  
from 8am and after school until 4pm.

Keep an eye on the departmental no-  
ticeboards for information about  
your clubs and any new clubs that  
may be starting.

## Chess Club

Tuesday 3.05-4.00pm  
SC4

Open to all abilities

Bring a  
friend and  
beat them  
Mr Chouls



# Art

**AFTERSCHOOL  
WORKSHOPS**

See teachers for timings  
and availability

Regular Work-  
shop

Thursday



## Geography

KS4 Drop-in session

every day

in GG4

3.15pm-4pm

# MATHS

## KS4 Workshop

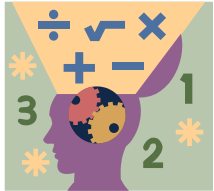
There is a workshop most afternoons, 3.05-4pm  
Mon, Tues, Wed.

Please speak to your teacher for individual timings, venue & availability

An illustration of a purple silhouette of a human head in profile, facing left. Inside the head, there are several interlocking gears: a blue one at the top, a green one in the middle, and a yellow one at the bottom. Above the head, there are four math symbols: a division sign (÷), a square root symbol (√), a multiplication sign (×), and a plus sign (+). Below the head, there are three numbers: 3, 2, and 1, each next to a small yellow star. The background of the illustration is a light green and yellow gradient.

There is a workshop most  
afternoons, 3.05-4pm  
Mon, Tues, Wed.

Please speak to your teacher for individual timings, venue & availability



RUN BY CAROL COOK (DON'T SHOUT OUT)

TUESDAY 3.15-4.15PM

## “Limited Places”

**Thursdays 3.05-4pm**  
**Main School Library**



**Mon-  
days  
3.05-**

**Tuesday 3.05pm-4pm**

## In Food 1

(last half-term of the



# MEDIA

TUESDAY  
GCSE WORKSHOP  
3.05 - 4pm

WEDNESDAY  
GCSE WORKSHOP  
3.05 - 5.30 pm

Workshop - by arrangement  
Thurs/Fri

TUESDAY  
GCSE WORKSHOP  
3.05 - 4pm

WEDNESDAY  
GCSE WORKSHOP  
3.05 - 5.30 pm

Workshop - by arrangement  
Thurs/Fri

For all your  
PE CLUBS,

please see the PE

Wednesdays  
3.05-4.15pm  
GCSE in TX2  
Mrs Smollett



## TUESDAY

### 3. 10pm-4pm

RM2

## Miss Beard

